



## LIMITING ORIFICE VALVE

JLV

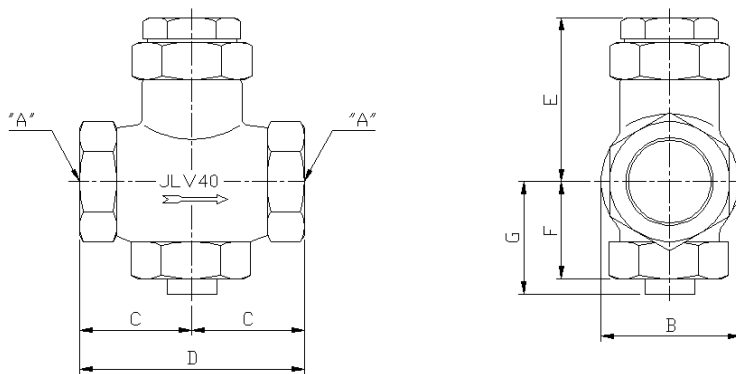


### FEATURES

- Gas Limiting orifice valve(JLV)
- 1. Precision machined valve flow piston.
- 2. Rugged cast-iron body.
- 3. JLV series can be used as straight through or angle valve.
- 3. Pressure rated to 25 psig.

The JINSUNG JLV series Limiting Orifice Gas Valves are designed for use with each burner in a multi-Burner furnace operation. They allow fine ad-justment of individual burners to ensure uniform Combustion at each burner. The JLV series valves can be used as a straight through or angle type valve as required by the burner system.

These valves are designed for use with any commercial fuel gas except coke oven gas.



### ■ DIMENSION

	A	B	C	D	E	F	G
15A	PF15A	62	54	108	82	45	58
20A	PF20A	62	54	108	82	45	58
25A	PF25A	62	54	108	82	45	58
40A	PF40A	82	68	136	100	58	75
50A	PF50A	95	74.5	149	109	87	104

·The descriptions and specifications are subeject to change without notice.

**JSE** JINSUNG ENERGY TECH.CO., LTD.

3Dong 6BL/33LT Banwol Industrial Complex,404-5, Mongnae-dong Danwon-gu, Ansan-si,Gyeonggi-do  
425-100 Korea Ph.: +82.31.319.7697 / Fax: +82.31.498.7697 E-mail: jinsungenergy@gmail.com