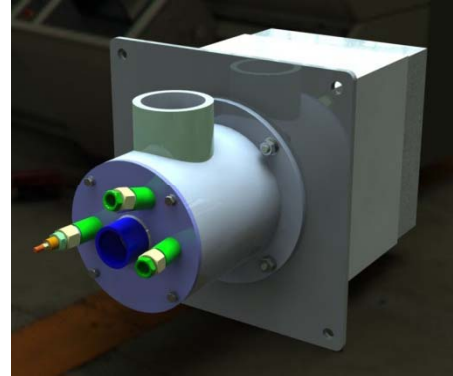




FLAME JET GAS BURNER

JMGT-050 JMGT-070
JMGT-100 JMGT-120
JMGT-130 JMGT-140



GENERAL INFORMATIONS

The “JMGT” gas burner series is a blown-air burner which can operate with natural gas, LPG, lean gas and gas with low calorific power (on request). It was designed for the installation in all the process in which it is necessary to obtain a deeply oxidizing combustion to limit working temperature. The completely automatic working allows on-off regulations, high/low flame, air/gas modulating.

The last allows to obtain max.-min. regulation ratio until 15:1.

The maximum thermal potentiality is 679kW (600,000kcal/h) while the minimum potentiality can come up to 5.8kW(5,000kcal/h).

Combustion air temperature required for this burner can change from room temperature until 300°C.

A particular care has been dedicated to CO and NOx emissions produced by combustion process, these elements are lower than limits required by EN 676 regulations.

Burner structure is painting casting, the body is of iron, the bottom of aluminum, the parts in contact with flame of refractory steel and Nickel Chrome alloys.

The burner has ignition and flame revelation electrodes, pressure switch to measure air and gas instantaneous flows, flame indicating light.

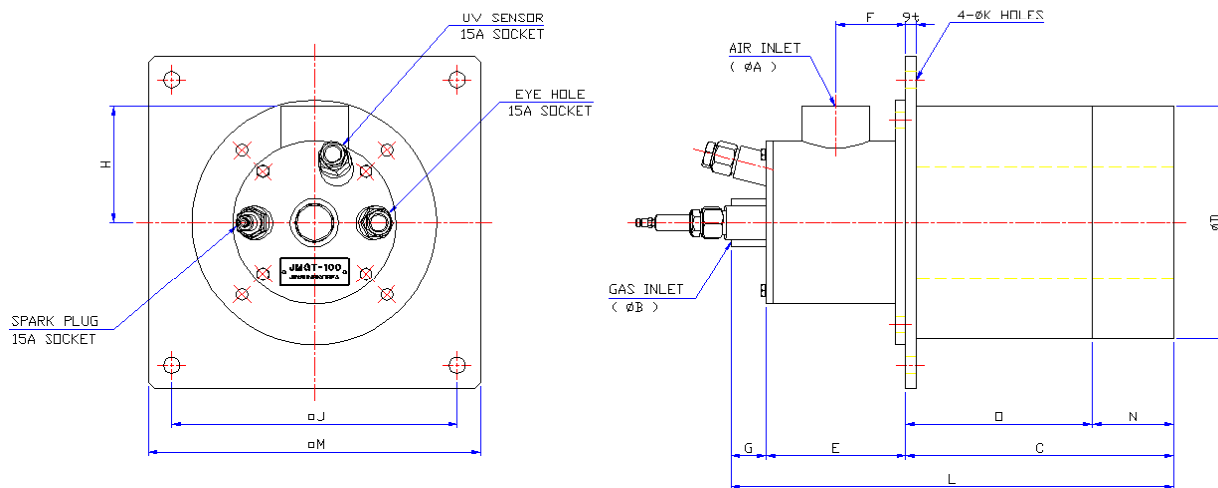
FEATURES

- Direct spark ignition, ionization flame detection electrode or U.V cell.
- For natural gas or LPG, other gaseous fuel on request.
- Max.-min. ratio 15:1
- Available as complete version with gas ramp, according to EN 676 on right or left hand.
- Easy to install, to start, to operate.

APPLICATIONS

- All types of kilns, suitable for oxidative, stoichiometric or reducing combustion.
- Ceramic, Bricks, Refractory:
 - Roller kilns, Tunnel kilns, Intermittent kilns, Melting kilns.
 - Continuous and Intermittent Dryers.
- Iron metallurgic Industry.
- Surfaces Treatment.

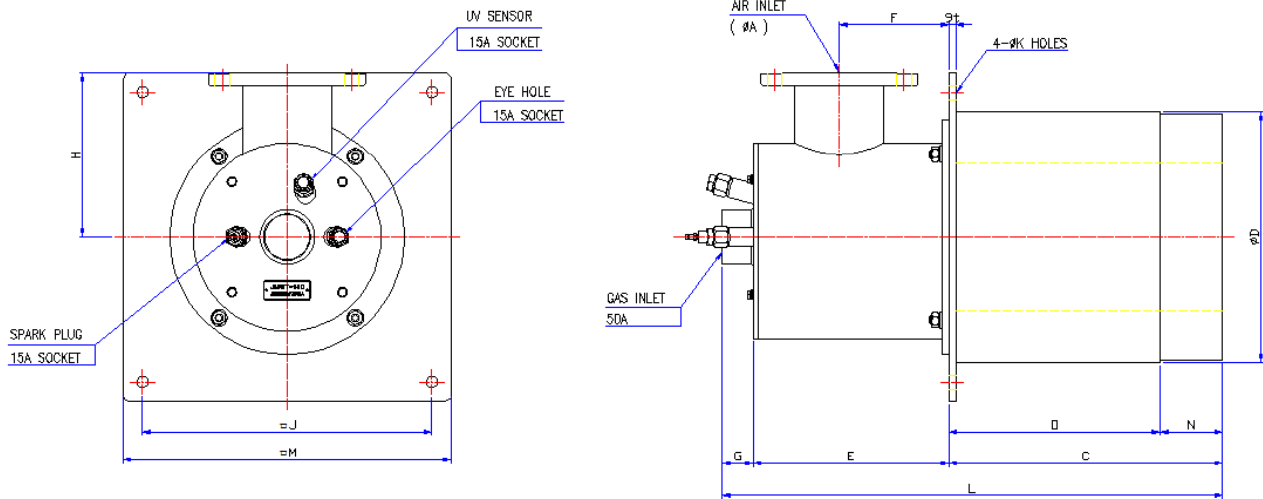
- Glass : Hardening ovens.
- Printing and Packing : Air Heaters for Rotogravures, Flexographic and Coupling and adhesive coating Machines.
- Food : Cereal Dryers, Roasters.
- Drying Tobacco etc.
- And furthermore, for any application which requires a wide regulation automatic gas burner, capable of operating in a strong vacuum or with strong counter-pressure.



MODEL	A(AIR)	B(GAS)	C	D	E	F	G	H	□ J	K	□ M	O	N	L
JMGT-050	25A PT	20A	190	170	100	50	30	80	220	4-Φ12	250	130	70	320
JMGT-070	32A PT	25A	230	200	120	60	30	100	245	4-Φ14	285	160	70	380
JMGT-100	40A PT	25A	230	200	120	60	30	100	245	4-Φ14	285	160	70	380
JMGT-120	50A PT	32A	240	240	140	80	35	120	290	4-Φ16	330	170	70	420
JMGT-125	65A PT	40A	320	280	170	90	35	140	330	4-Φ16	370	245	75	530
JMGT-130	80A PT	40A	320	280	180	100	40	150	330	4-Φ18	380	245	75	540

TECHNICAL DATA

CAPACITIES & SPECIFICATIONS							
MODEL	BURNER NOMINAL CAPA'		AIR PRESSURE @15°C (mb)*	AIR VOLUME @15°C Nm ³ /hr	FLAME LENGTH (MM)*	BURNER MAX. CAPA.	
	×10 ³ Kcal/hr	Kw				×10 ³ Kcal/hr	Kw
JMGT-050	30	34	65	65	200	50	58
JMGT-070	40	46	65	92	300	70	81
JMGT-100	80	93	65	156	355	120	139
JMGT-120	150	174	65	262	500	200	232
JMGT-125	200	232	65	327	650	250	290
JMGT-130	300	348	65	460	762	350	406



MODEL	A(AIR)	B(GAS)	C	D	E	F	G	H	□ J	K	□ M	O	N	L
JMGT-140	100 F'LG	50A	350	320	250	140	40	210	370	4-Φ18	420	270	80	640

TECHNICAL DATA

CAPACITIES & SPECIFICATIONS							
MODEL	BURNER NOMINAL CAPA'		AIR PRESSURE @15°C (mb)*	AIR VOLUME @15°C Nm ³ /hr	FLAME LENGTH (MM)*	BURNER MAX. CAPA.	
	×10 ³ Kcal/hr	Kw				×10 ³ Kcal/hr	Kw
JMGT-140	500	581	65	786	1200	600	697

The above mentioned performance data are described at their maximum power. Pressure showed are guidelines only. Gas pressures are refer to Methane gas.

* Stoichiometric conditions

Performance data and dimensions are guidelines only.

·The descriptions and specifications are subeject to change without notice.



JINSUNG ENERGY TECH.CO., LTD.

3Dong 6BL/33LT Banwol Industrial Complex,404-5, Mongnae-dong Danwon-gu, Ansan-si,Gyeonggi-do
425-100 Korea Ph.: +82.31.319.7697 / Fax: +82.31.498.7697 E-mail: jinsungenergy@gmail.com