

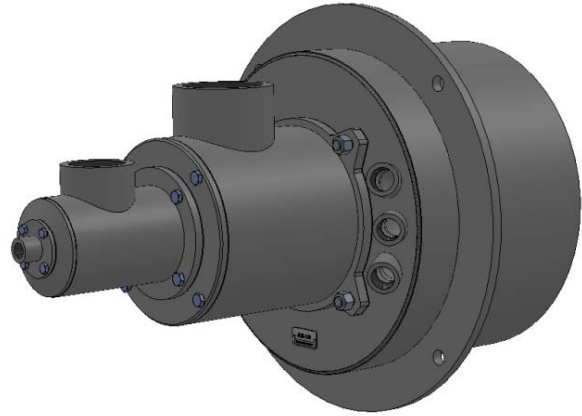


NOZZLE MIX OIL BURNER

JOB - 040

JOB - 070

- HIGH CAPACITY
- WIDE TURNDOWN
- FLAME STABILITY



OPERATION

Combustion air and fuel are channeled into the nozzle separately, permitting wide turndown while reducing the possibility of “flashback”. Normally, all combustion air is supplied through the burner. When operating the oil atomizing air (primary air) must be used along with the secondary air. The JOB burners couple a uniform flame front with flame stability and retention over the entire operating range.

JOB burners are available for preheated air operation up to 350°C or for high temperature furnace application. Atomizing air is maintained at ambient conditions during preheated air operation.

JOB burner can be controlled manually or automatically. Automatic control normally employs a Ratio Regulator for each control zone to maintain air-fuel ratio. An alternate system uses control valves in each of the fuel and air lines, linking the valves to a single motor controller.

CONSTRUCTION

With no moving parts, the burner is virtually maintenance free. Parts subject to heat are either of heat resisting cast iron (chrome iron) or stainless steel. The tile is manufactured, dried and cured by JSE. Special refractory materials and jacketed tiles can be supplied upon request.

MOUNTING

The burner mounting plate, and refractory tile are shipped as an assembled unit. If the pilot and secondary air are to be in line, a 45° No.1 spark ignited gas pilot, Model No.JPG050 must be used.

(Alternately, if a 9 o'clock secondary air position is required and it is desired to use the standard No.1 pilot, the mounting plate may be rotated so as to position the pilot at either the 12 o'clock or 3 o'clock position.)

Each JOB is equipped with companion flanges on the main air connections to permit easy burner installation and removal and allow the mounting of an orifice plate for reduced air flows, if required.

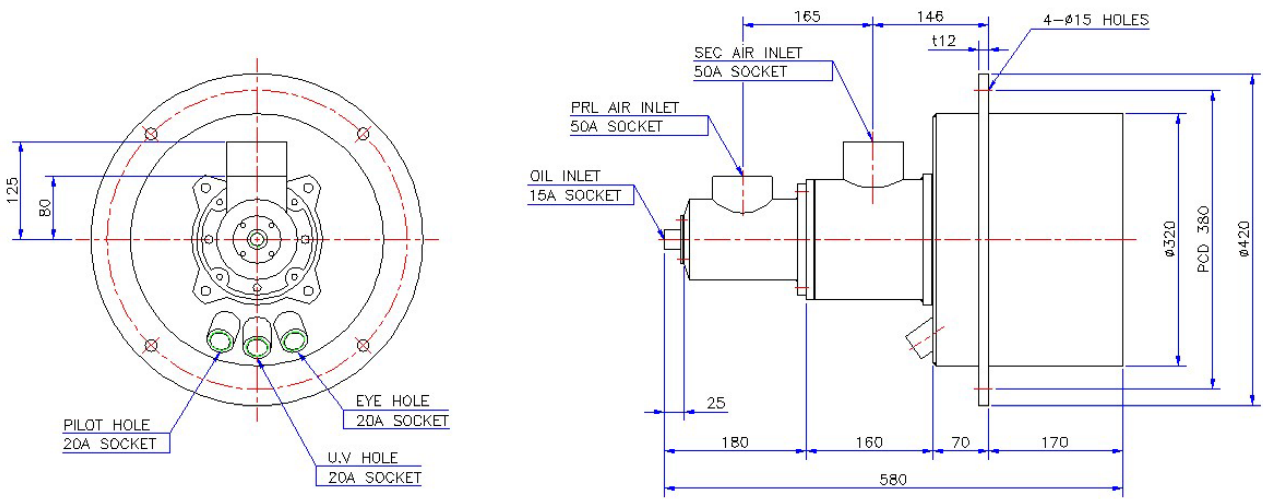
PILOT

The burner mounting plate includes a port for direct spark or gas pilot ignition system. Direct spark ignition is available for gas operation only. The pilot is required for initial burner ignition only and is not required to maintain ignition.

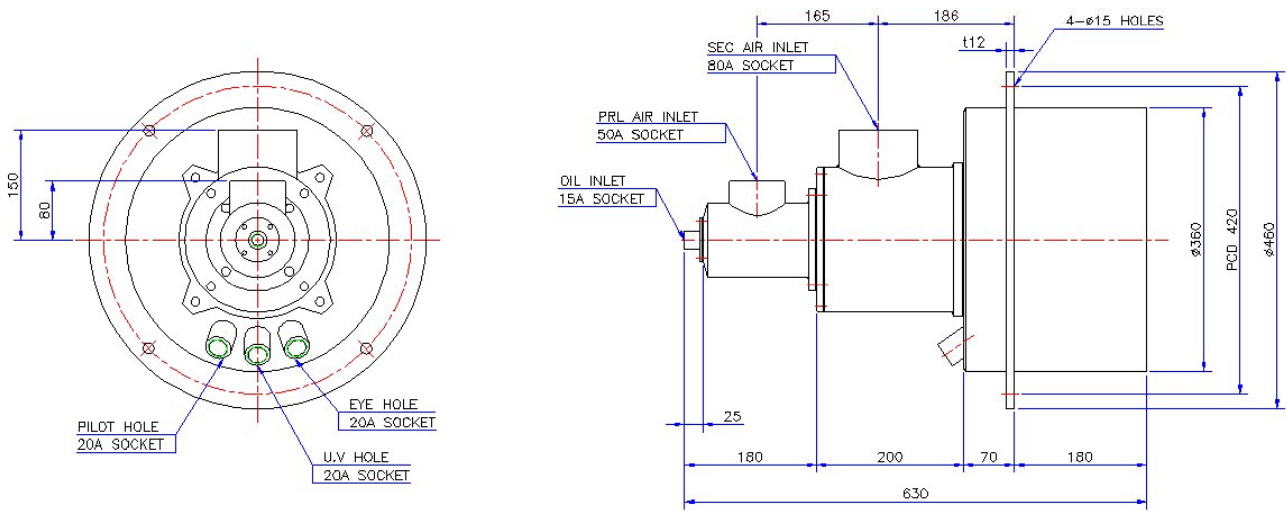
FLAME SUPERVISION

The JOB mounting plate is provided with a port for monitoring the pilot and main flame, using a UV scanner or other suitable device.

● JOB-040



● JOB-070



JOB NOZZLE MIX BURNERS COMBINATION FUEL FIRED (TABLE 1.)

AIR PRESSURE (16 oz)				
JOB BUR NO.	PRI AIR CFM @ 16 oz.	SEC AIR CFM	CAP IN 1000 (Kcal/Hr)	OIL CAP GPH
JOB-040	28.3	263	365	10.6
JOB-070	57	544	751	21.8

※ NOTES FOR TABLES 1

1. Fuel Capacity based on 138,000 BTU/gal oil and 20% excess air.
2. Air pressure is "total pressure" measured 6 pipe diameters from burner.
3. Oil Pressure should be at least 5-10 psig at the burner.
4. Capacities for preheated air operation will differ from those shown.

OIL-MAXIMUM % EXCESS AIR (TABLE 2.)

JOB BURNER NO.	AIR PRESSURE		
	4 oz	8 oz	16 oz
JOB-040	100	170	350
JOB-070	100	250	400