

RADIANT TUBE REGENERATIVE BURNERS

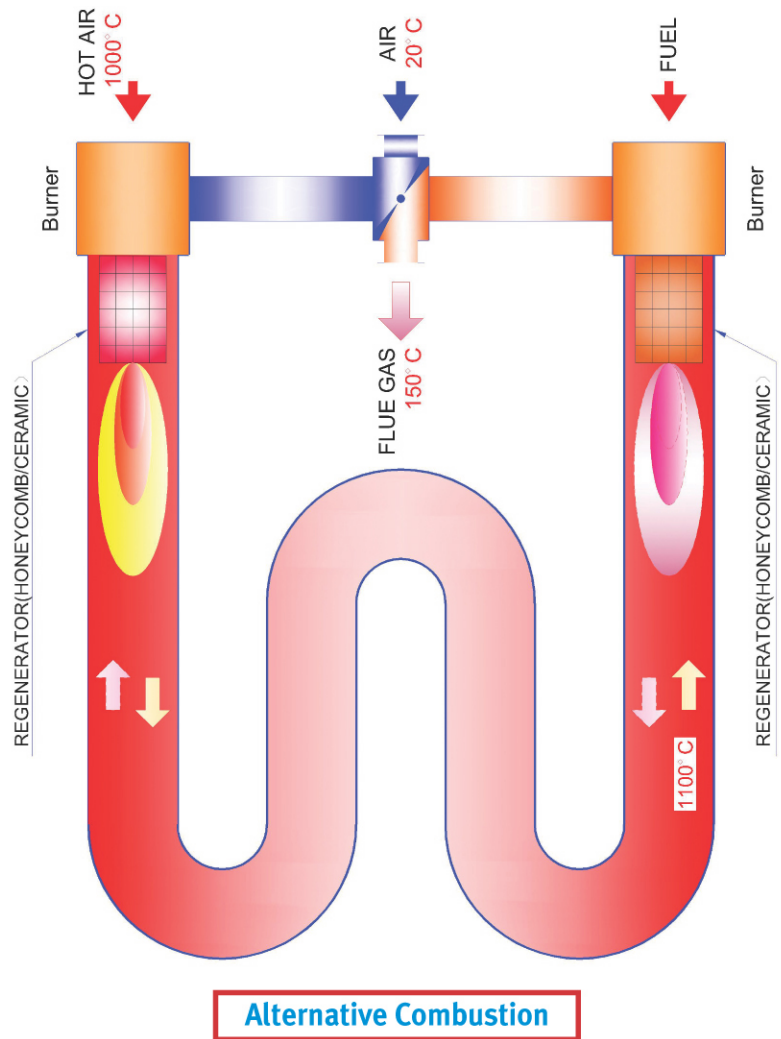
JRB- RT1 JRB- RT2
JRB- RT3 JRB- RT4

FEATURES

- Low NOx-100ppm
- Exceptionally high heat recovery
- Application temperatures up to 1400°C
- Advanced, unique design giving simple Construction
- 85% Energy Recovery

APPLICATIONS

- High Temperature Heat Treatment Furnaces
- Carburizing Furnaces
- Glass Heat Treatment Furnaces
- Salt Bath Heat Treatment Furnaces
- Indirect Heating & Drying Furnaces, etc



JINSUNG ENERGY TECH.CO., LTD.

3Dong 6BL/33LT Banwol Industrial Complex,404-5, Mongnae-dong Danwon-gu, Ansan-si,Gyeonggi-do 425-100 Korea
Ph.: +82.31.319.7697 / Fax: +82.31.498.7697 E-mail: jinsungenergy@gmail.com

REGENERATIVE

BURNER SPECIFICATION

SPECIFICATIONS

JSE regenerative burners are available in a range from 46 to 150 kW.

Capacity control options are: modulating, high/low, on/off and pulse firing.

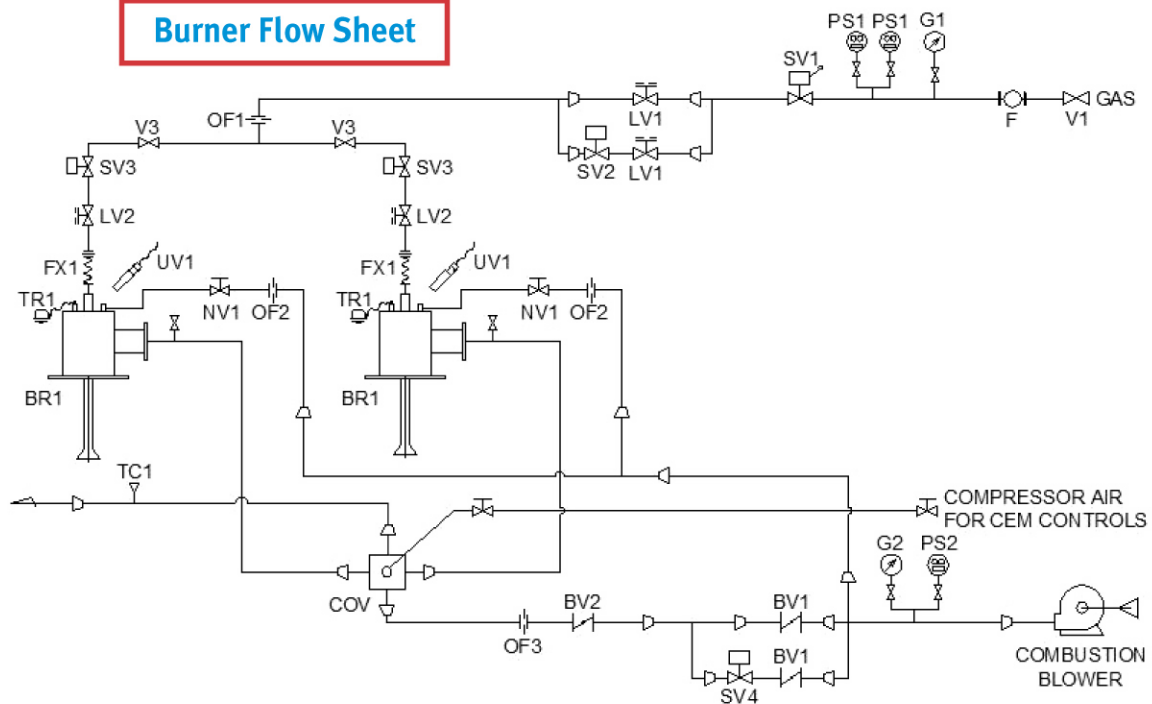
A special version of the JRB burners is available for radiant tube firing.

JSE offer a full combustion engineering service for any process, including engineering design, construction, installation and commissioning. Full technical details can be found in the accompanying data sheets.

CAPACITIES AND SPECIFICATIONS

Burner Model No	Standard Rating× 10 ³ kcal/h	Air Pressure 15°C (mb)*	Gas Pressure 15°C (mb)*	Max Rating× 10 ³ kcal/h
JRB-RT1	40	150.0	100	45
JRB-RT2	55	150.0	100	60
JRB-RT3	86	150.0	100	90
JRB-RT4	120	150.0	100	130

Burner Flow Sheet



4	SV3	SOL. V/V	4	LV2	GAS LIMITING V/V	2	BV1	BUTTERFLY V/V	2	TC1	THREMO COUPLE
1	SV2	SOL. V/V	2	LV1	GAS LIMITING V/V	1	PS2	PRESSURE SWITCH	2	CEM1	SWITCHING VALVE
1	SV1	MAIN GAS SHUTOFF. V/V	2	OF3	AIR ORIFICE METER	2	PS1	PRESSURE SWITCH	4	FX1	FLEXINLE TUBE
1	R1	REGULATOR	4	OF2	AIR ORIFICE METER	1	G2	PRESSURE GAUGE	4	UV1	ULTRA VISION
1	F	GAS FILTER	2	OF1	GAS ORIFICE METER	1	G1	PRESSURE GAUGE	4	TR1	I.G TRANSFORMER
4	BR1	GAS BURNER	1	SV4	SOL. V/V	4	NV1	AIR NEEDLE VALVE	2	BV2	BUTTERFLY V/V
Q' TY	NO.	NAME	Q' TY	NO.	NAME	Q' TY	NO.	NAME	Q' TY	NO.	NAME



JINSUNG ENERGY TECH.CO., LTD.

3Dong 6BL/33LT Banwol Industrial Complex,404-5, Mongnae-dong Danwon-gu, Ansan-si,Gyeonggi-do 425-100 Korea
Ph.: +82.31.319.7697 / Fax: +82.31.498.7697 E-mail: jinsungenergy@gmail.com